



ALUMINUM ALL-PURPOSE TRUCK BODIES



Above: Optional underbody toolbox shown. Right: Optional above body and underbody toolboxes shown.



The attractive all aluminum "Badger" bodies are lightweight yet rugged enough to withstand your demanding day-in and day-out use.

- For 1/2, 3/4 or 1-ton chassis
- Rust-proof • Minimal maintenance
- Increased fuel mileage
- Ideal for gooseneck hauling
- 3-year limited warranty

ALUMINUM "BADGER" FEATURES

All Aluminum Construction:

- 1/8" (.125) thick treadbrite floor, side rails, and reinforced rear apron.
- 3" channel crossmembers.
- 4" channel long members (6" optional) gusseted to cross members.
- Heavy-duty tapered bulkhead welded and gusseted to platform.
- Stake pockets on side rails sized to accept 2x4 boards.
- 1/4" x 2" banding rails to secure cargo.

Lighting:

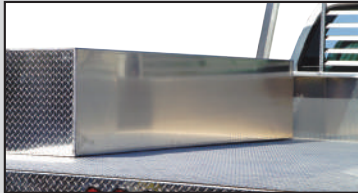
- FMVSS compliant reflectorized corner clearance lights, 3-light cluster (I.D. lights) and tail, turn, stop and backup lights.
- Light wiring in loom harness.

MODEL	LENGTH	WIDTH	C.A.	APPROXIMATE WEIGHT
AB8N	8'	82"	54"-60"	340 lbs.
AB8W	8'	96"	60"	360 lbs.
AB9N	9'	82"	60"	440 lbs.
AB9W	9'	96"	60"	459 lbs.
AB10N	10'	96"	84"	510 lbs.
AB11W	11'	96"	84"	561 lbs.
AB12W	12'	96"	84"	612 lbs.

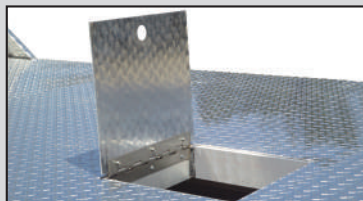
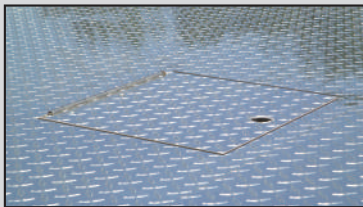
Omaha Standard reserves the right to modify, change or revise published specifications and furnish products so altered without prior notice.

BADGER ALUMINUM ALL-PURPOSE TRUCK BODIES

OPTIONS

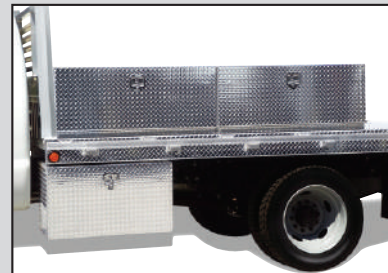
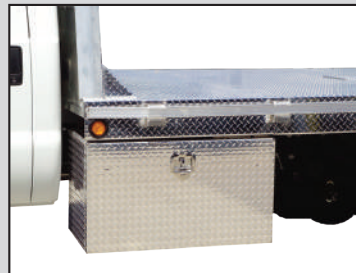


- Omaha "Strongbox" above body aluminum toolboxes.



- Flush mounted hinged gooseneck door.

Omaha Standard reserves the right to modify, change or revise published specifications and furnish products so altered without prior notice.



- Omaha "Strongbox" underbody aluminum toolboxes.

Other Options:

- Rear stake pockets and banding rail.
- 12" aluminum drop-in contractor racks - sides and rear. Requires optional rear stake pockets.
- 6" channel long members.



We Create Value...

Omaha Standard



Made in the U.S.A.

3501 South 11th Street ■ Council Bluffs, Iowa 51501 U.S.A.
 Phone 712-328-7444 ■ 800-279-2201 ■ FAX 800-568-7444
 www.omahastd.com ■ e-mail: os@omahastd.com

In the interest of product improvement, Omaha Standard Inc. reserves the right to modify, change or revise design and specifications and furnish product so altered without prior notice.

ABAPB 0108



SOLD BY:

Cliffside Body Corp.

130 Broad Avenue

Fairview, NJ 07022

Phone: 201-945-3970

www.CliffsideBody.com

OR SEE YOUR FAVORITE TRUCK DEALER